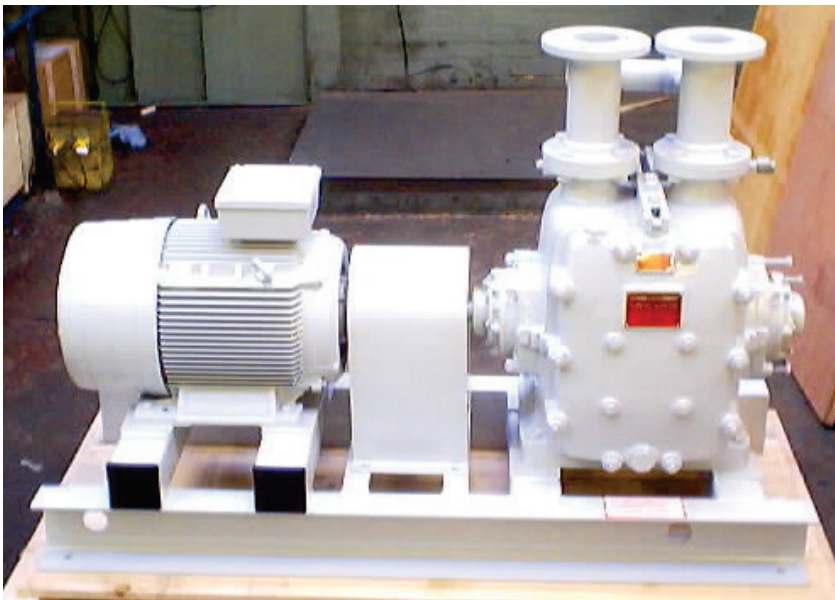
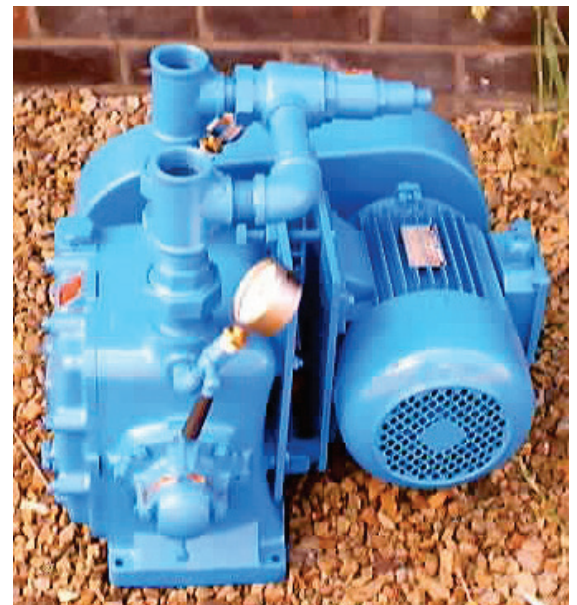


### Bilge, Sludge & Waste Oil Transfer

- > The same pump for water and oils
- > Handle sludge of low or very high viscosity
- > Will not be harmed if left running on empty sludge tank
- > No problematic foot valve required



▲ H300 sludge pump 90 gpm at 110 psi, with 20 ft suction lift



▲ Compact - L125 bilge pump 13 gpm at 45 psi, with 27 ft suction lift

- > High suction lifts ensure bilge pumps can be positioned in the most convenient positions
- > Low shear effect prevent oils from emulsifying
- > Removes the last drop from tanks and containers

Bilge, Sludge & Waste Oil

Pump type	Capacity		Total head		Motor rating			Maximum suction lift			Pump speed r.p.m.
	m <sup>3</sup> /hr	US gmp	ft H <sub>2</sub> O	lb/in <sup>2</sup>	0 - 75cSt	1000cSt	2500cSt	0 - 75cSt	1000cSt	2500cSt	
					HP	HP	HP	ft H <sub>2</sub> O	H <sub>2</sub> O	H <sub>2</sub> O	
L100	2	9	100	45	1	1.5	2	27	20	17	1200
L125	3	13	100	45	1.0	2.0	3.0	27	20	17	900
L150	6	26	100	45	2.0	4.0	5.5	27	20	17	850
L200	10	44	100	45	3.0	5.5	7.5	25	18	17	850
L300	20	88	100	45	5.5	10.0	15.0	25	18	15	570
L400	40	176	100	45	10.0	20.0	30.0	25	18	15	570

H100	2	9	175	75	1	1.5	3	27	20	17	1000
			250	110	1.5	2					
H125	3	13	150	65	1.5	2.0	5.5	27	20	17	850
			250	110	2.0	3.0					
H150	6	26	180	78	3.0	4.0	7.5	27	20	17	800
			250	110	4.0	5.5					
H200	10	44	180	78	4.0	5.5	10.0	25	20	17	720
			250	110	5.5	7.5					
H300	15	66	200	87	7.5	10.0	20.0	25	20	17	650
			250	110	10.0	15.0					
H400	30	132	200	87	15.0	20.0	40.0	25	20	17	650
			250	110	20.0	30.0					

An example of their superiority for this class of work is their adoption by the U.S. Navy as a standard pump on all warships and auxiliary vessels for transporting waste oils from slop tanks to shore treatment facilities. The Megator Sliding Shoe Positive-Displacement Pump, constructed to its normal marine standards, is equal in quality to the stringent requirements of military specifications.



▲ MV Schippersgracht container vessel, fitted with H400 sludge pumps



▲ USS Kennedy aircraft carrier, fitted with H300 bilge pumps