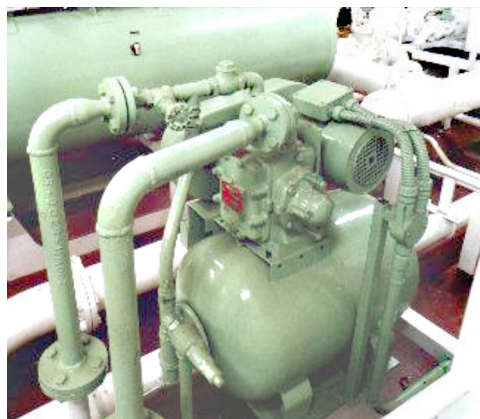




**Megator marine pressure sets** are compact self-contained units, incorporating the highly successful sliding-shoe pumps, hydraulic accumulator, inter-wired control panel and all interconnecting piping assembled on a fabricated steel frame. On-board installation only requires piping connections to suction and discharge manifolds, connection of main electrical supply to control panel.

The pressure sets are supplied as single, twin or triple pump units. The usual arrangement is to have twin-pump sets for main and standby/support operation, the standby/support pump can either be selected by a manual switch on the control panel or can be made to start automatically should the duty pump fail or become unable to meet an abnormal demand. If required, triple pump sets for fresh and salt water services incorporating a common standby pump can be supplied (as pictured above). The method of changeover from duty to stand-by is extremely simple without the need to disconnect any pipework and can be done in minutes.

- > Single, Twin or Triple pump systems
- > Self Priming Pumps
- > High suction lifts allows convenient location
- > Simple plug & play installation
- > Pumps not harmed under dry-running
- > Bespoke systems available



Selection

Single Pump Systems

Code	Capacity		Pump	Motor		Accumulator	
	m <sup>3</sup> /hr	US gpm		kW	HP	Ltrs	US Gal
SLS10	1	4.4	H75	0.75	1	100	26
SLS20	2	8.8	H100	1.1	1.5	200	53
SLS30	3	13.2	H125	1.5	2	200	53
SLS50	5	22	H150	2.2	3	300	79
SLS100	10	44	H200	4	5.5	500	132

Twin Pump Systems (Duty & Auto support/standby)

Code	Capacity				Pump	Motor		Accumulator	
	Duty Pump		Auto Support			kW	HP	Ltrs	US Gal
	m <sup>3</sup> /hr	US gpm	m <sup>3</sup> /hr	US gpm					
SLT20	2	8.8	4	17.6	H75	1.1	1	100	26
SLT30	3	13	6	26.4	H100	1.5	2	200	53
SLT50	5	22	10	44	H125	2.2	3	200	53
SLT75	7.5	33	15	66	H150	3	4	300	79
SLT100	10	44	20	88	H200	4	5.5	500	132

Triple Pump Systems (Fresh & Seawater + Auto support/standby)

Code	Capacity				Pump	Motor		Accumulator x 2	
	Duty Pump		Auto Support			kW	HP	Ltrs	US Gal
	m <sup>3</sup> /hr	US gpm	m <sup>3</sup> /hr	US gpm					
SLK20	2	8.8	4	17.6	H75	1.1	1	100	26
SLK30	3	13	6	26.4	H100	1.5	2	200	53
SLK50	5	22	10	44	H125	2.2	3	200	53
SLK75	7.5	33	15	66	H150	3	4	300	79
SLK100	10	44	20	88	H200	4	5.5	500	132



**Megator Limited (UK)**

Hendon St, Hendon • Sunderland, SR1 2NQ, United Kingdom

Tel: +44 (0) 191 567 5488 • Email: info@megator.co.uk

[www.megator.co.uk](http://www.megator.co.uk)

**Megator Corporation (USA)**

1721 Main Street • Pittsburgh, PA 15215, USA

Tel: +1 412 963 9200 • Email: info@megator.com

[www.megator.com](http://www.megator.com)

