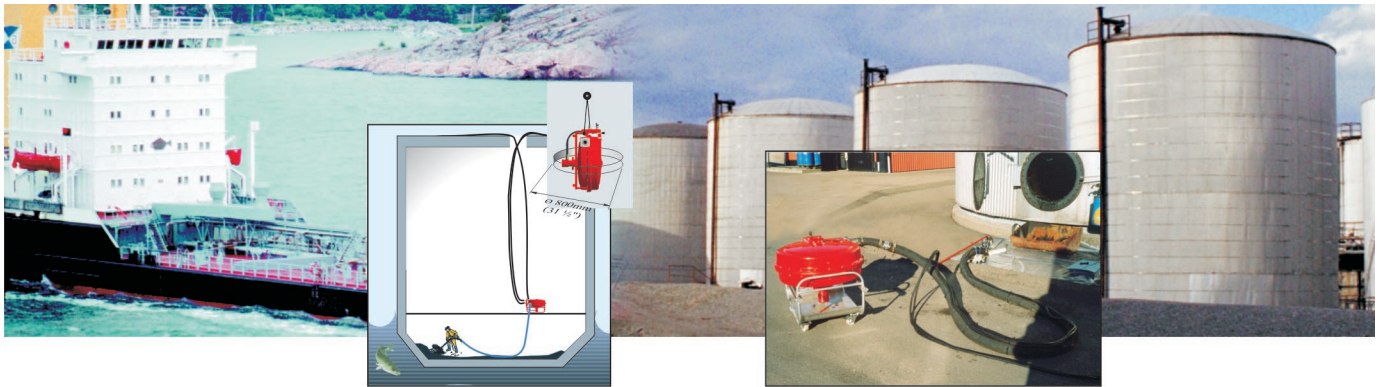


TANK CLEANING

salarollpump®

Slurry removal from tanks has always been difficult and time consuming. The salarollpump with its exceptional suction and discharge pressure makes it possible to lift high viscous slurry from the bottom of the tank to a manhole opening at the top, or at the side of the tank.

Solid particles up to 37 mm, (1 1/2") can pass through without damaging the system. The unique design allows for self-priming and enables the pump to safely run with a completely dry suction, without depending on a by-pass or other easily blocked device.



Sludge nozzles



The pump can be lifted in and lowered through a manhole at 800mm (31 1/2") diameter. The pump is hydraulically driven and the powerpack can be equipped with diesel-, electric or gasoline engine. Different sludge nozzles are available with or without a hydraulically driven rotating blade and with water injection. The water forms a lubrication film between the hose and the slurry. Steam can also be injected to the nozzle which heats up only the slurry that is being pumped at the moment. The system can be used for pumping flammable products by using grounding equipment.

Sludge nozzles

In addition to the standard nozzles a special arrangement is available for tank cleaning. (see picture). The hose rests on trolleys with wheels and the nozzle is provided with a handle and a swivel. When pushing the nozzle the hose will follow. With help of the swivel the nozzle can be turned the other way. Three different nozzles are available for this arrangement. As shown on the picture, with and without a rotating hydraulically driven

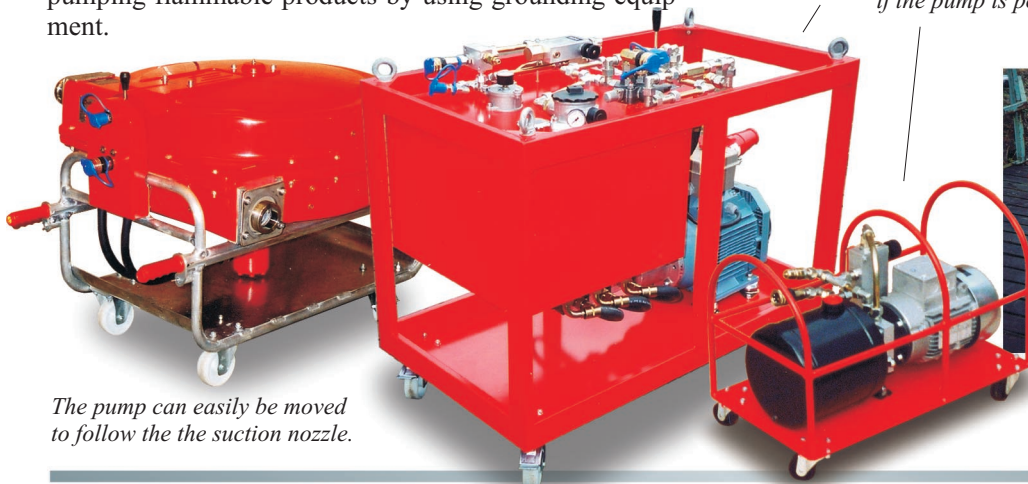
blade and a lower nozzle for clean up of the last thin layer of the pumped product. The hydraulic power for the blade is provided either from a separate electric power pack or from the industrial power pack.

The hydraulic power pack can be placed outside the hazardous area. The hydraulically driven blade in the sludge nozzle is powered from the industrial power pack, or from a separate power pack if the pump is powered from the all terrain power pack.

Interchangeable bases

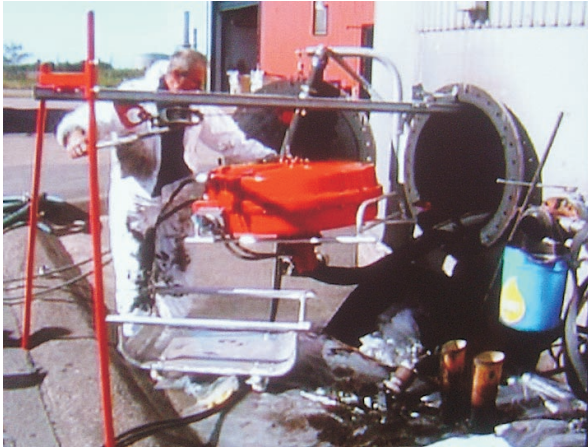


The pump can be detached from the all terrain base and placed on the industrial base for tank cleaning.



The pump can easily be moved to follow the the suction nozzle.

LIFTING ALTERNATIVES



The pump can be lifted into a manhole with dimension 800 mm (31 1/2"). Accessories for lifting through the horizontal manhole are available. The lower part of the base is easily disconnected when the pump is lifted and connected again when the pump is lifted through the manhole.

Also, dismantle the couplings on both sides of the pump when lifting through the minimum dimension manhole. Use the tool provided.



TECHNICAL SPECIFICATIONS

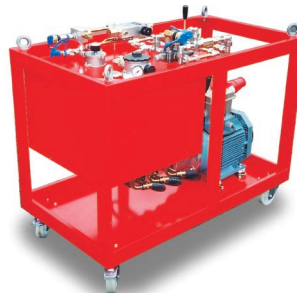
PUMP WITH INDUSTRIAL BASE



Weight:	134 kg	295 lb
Length:	1 200 mm	74 in
Width:	850 mm	34 in
Height:	770 mm	30 in

INDUSTRIAL POWER PACK

(Powers both pump and sludge nozzle)



Weight:	198 kg	435 lb
incl. 50 l oil		
Length:	1.100 mm	43 inch
Width:	600 mm	24 inch
Height:	1.000 mm	39 inch

ACCESSORY FOR ALL TERRAIN POWER PACK

(Powers sludge nozzle)



Weight:	25 kg	55 lb
Length:	600 mm	24 in
Width:	400 mm	16 in
Height:	300 mm	12 in

Additional specifications found in the salarollpump brochure page 10.

Manufacturer P.O. Box 66, SE-796 22 ÄLVDALLEN, Sweden
 E-mail: info@salarollpump.com
 web site: www.salarollpump.com
 Phone: Int+46 - 251 - 511 95
 Fax: Int +46 - 251 - 511 75

salarollpump®

USA Division



MEGATOR CORPORATION

562 Alpha Drive, Pittsburgh, PA 15238

E-mail: info@megator.com

web site: www.megator.com

Phone: (412) 963-9200

Fax: (412) 963-9214