

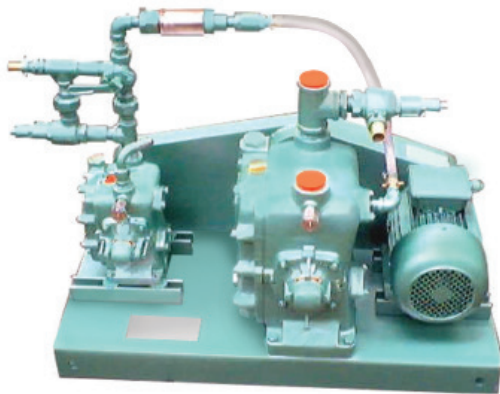
Self-contained packaged units for use with concentrated or neat dispersant

Designed to handle both diluted dispersant and the new generation of concentrates, Megator twin-pump dispersant sets consist of a small capacity injection pump and a larger pump for seawater, supplied as a packaged unit with common prime mover, interconnecting pipework and valves.

- > Accepted for use with WSL-designed spray equipment
- > Open-sea or inshore duty
- > Self-priming with powerful suction performance
- > Diesel or electric drive
- > Three standard units



Spray Arms



DP20 Set



DP25 Set

Operational advantages

Dispersant consumption is appreciably reduced by using Megator units. With its outstanding self-priming and dry-running capability, the Megator sliding-shoe pump can be stopped after the first run through an oil slick and then simply restarted for the second pass without the worry of loss of prime.

Model	Dispersant Pump			Seawater Pump			Prime Mover
	Type	Output		Type	Output		
		l/s	gal/min		l/s	gal/min	
DP6	F35B	0.1	1.3	H100	0.9	11.8	Electric
DP20	L75	0.15	2	L150	1.36	18	Diesel or Electric
DP25	H75	0.40	5.5	H200	3.75	49.5	Diesel or Electric

Seawater pumps (all Models) and dispersant pumps (Models DP20 and DP25 only):

Megator positive displacement, sliding-shoe type with cast iron body, stainless steel rotor, port plate and mechanical seals. Bronze pumps optional.

Dispersant pump (Model DP6):

Bronze body, rubber impellor, stainless steel shaft.

Electric motors (Models DP20 and DP60 only):

IP55, TEFC to Lloyd's regulations for between-decks service. Suitable for 380-440 volts, 3-phase, 50-60Hz supply (other voltages available on request). Model DP6 1.5kW, Model DP20 3kW, Model DP25 0.75kW & 4kW.

Options:

Diesel engines (Models DP20 and DP25 only):

Air-cooled type with fuel tank, fuel filter, paper element air filter, exhaust silencer and centrifugal clutch.

Flow meter (Models DP20 and DP25 only):

A flowmeter with hand controlled bypass is fitted on the discharge side of the dispersant pump to vary the dispersant flow rate.

Spray arms:

Aluminium spray arms complete with stainless steel masts and rigging and plastic down pipes

Approximate nett weights:

Model DP6 -100kg (220lb)

Model DP20 - 228kg (502lb) diesel, 144kg (315lb) electric

Model DP25 - 292kg (643lb) diesel, 220kg (485lb) electric



Megator Limited (UK)

Hendon St, Hendon • Sunderland, SR1 2NQ, United Kingdom

Tel: +44 (0) 191 567 5488 • Email: info@megator.co.uk

www.megator.co.uk

Megator Corporation (USA)

1721 Main Street • Pittsburgh, PA 15215, USA

Tel: +1 412 963 9200 • Email: info@megator.com

www.megator.com

