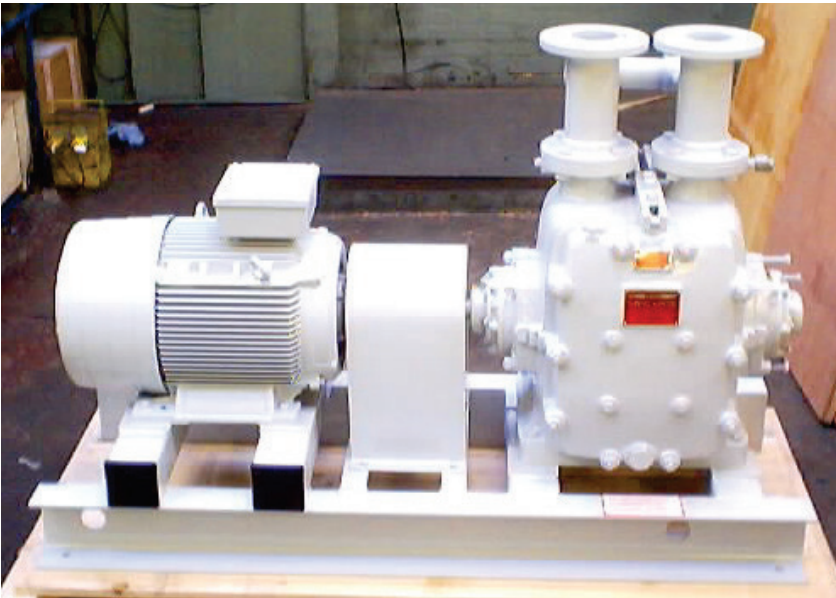
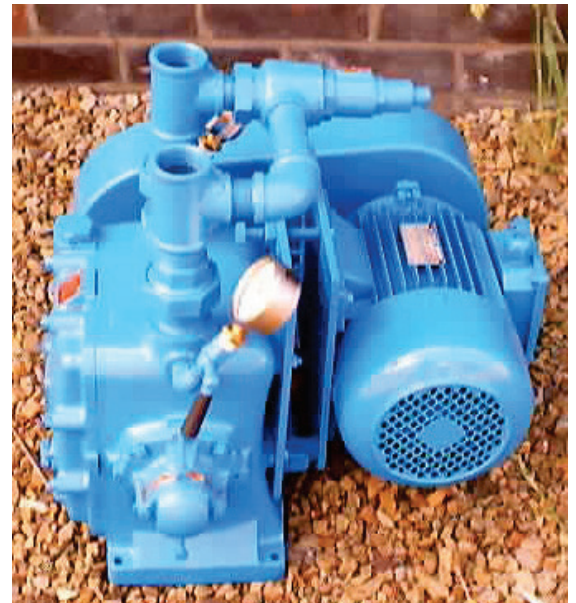


## Bilge, Sludge & Waste Oil Transfer

- > The same pump for water and oils
- > Handle sludge of low or very high viscosity
- > Will not be harmed if left running on empty sludge tank
- > No problematic foot valve required



▲ H300 sludge pump 15m<sup>3</sup>/hr at 7.5 bar,  
with 5 metre suction lift



▲ Compact - L125 bilge pump 3m<sup>3</sup>/hr at  
3 bar, with 8 metre suction lift

- > High suction lifts ensure bilge pumps can be positioned in the most convenient positions
- > Low shear effect prevent oils from emulsifying
- > Removes the last drop from tanks and containers

## Bilge, Sludge & Waste Oil

Pump type	Capacity		Total head		Motor rating			Maximum suction lift			Pump speed r.p.m.
	m <sup>3</sup> /hr	Imp gmp	m H <sub>2</sub> O	Bar	0 - 75cSt	1000cSt	2500cSt	0 - 75cSt	1000cSt	2500cSt	
					kW	kW	kW	m H <sub>2</sub> O	m H <sub>2</sub> O	m H <sub>2</sub> O	
L100	2	7.5	30	3	0.75	1.1	1.5	8.2	6.1	5.2	1200
L125	3	11	30	3	1.1	1.5	2.2	8.2	6.1	5.2	900
L150	6	22	30	3	1.5	3.0	4.0	8.2	6.1	5.2	850
L200	10	37	30	3	2.2	4.0	5.5	7.5	5.4	5.2	850
L300	20	75	30	3	5.5	7.5	11.0	7.5	5.4	4.6	570
L400	40	150	30	3	7.5	15.0	22.0	7.5	5.4	4.6	570

H100	2	7.5	53	5.3	0.75	1.1	2.2	8.2	6.1	5.2	1000
			75	7.5	1.1	1.5					
H125	3	11	45	4.5	1.1	1.5	4	8.2	6.1	5.2	850
			75	7.5	1.5	2.2					
H150	6	22	55	5.5	2.2	3.0	5.5	8.2	6.1	5.2	800
			75	7.5	3.0	4.0					
H200	10	37	55	5.5	3.0	4.0	7.5	7.5	6.1	5.2	720
			75	7.5	4.0	5.5					
H300	15	55	60	6	5.5	7.5	15	7.5	6.1	5.2	650
			75	7.5	7.5	11.0					
H400	30	110	60	6	11.0	15.0	30	7.5	6.1	5.2	650
			75	7.5	15.0	22.0					

An example of their superiority for this class of work is their adoption by the U.S. Navy as a standard pump on all warships and auxiliary vessels for transporting waste oils from slop tanks to shore treatment facilities. The Megator Sliding Shoe Positive-Displacement Pump, constructed to its normal marine standards, is equal in quality to the stringent requirements of military specifications.



▲ MV Schippersgracht container vessel, fitted with H400 sludge pumps



▲ USS Kennedy aircraft carrier, fitted with H300 bilge pumps

