



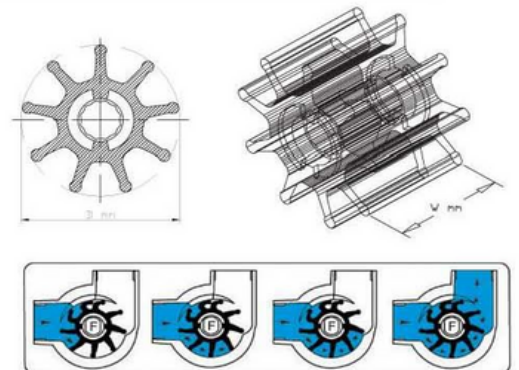
The use of the Flex Rubber Impeller

- N-Rubber Use of transferring water, seawater, soil and waste water, sewage, mud sludge, shampoo, rinse, detergent and bubble
- H-Rubber Use for transferring petroleum, light oil, thinner, gasoline, cutting oil, paint, alcohol, animal- and vegetable-oil, beef tallow and other various kinds of oil.
- F-Rubber Use for transferring sulfuric acid, cuprous sulfuric acid, ferrous sulfuric acid, hydrochloric acid, ferrous chloride, nitric acid, dyes, phosphoric acid, acetic acid, caustic soda and other chemicals.
- U-Rubber Use of transferring lubricant, oil, DOP, waste oil, vinegar, vinegar-mixed soy sauce, fermented fishes and liquids, and nontoxic substances required from pharmaceutical and food industries.
- CR-Rubber Use of transferring seawater.

Pump Model	D×W (mm)	Blade
DS-10	52×22	6
DS-15	56×37	7
DS-20FW	65×39	7
DS-25	65×50	7
DS-25SW	95×45	9
DS-R32	81×54	8
DS-R32FW	95×54	9
DS-R40	95×63	9
DS-R40SW	127×57	9
DS-R50	95×90	9
DS-R50SW	127×69	9
DS-R65FW	127×80	9

Pump Model	D×W (mm)	Blade
DS-R65SW	163×85	9
DS-R80SW	163×102	9
DS-R100FW	163×122	9
DS-R120FW	163×145	9
DS-R120SW	200×133	10
DS-R150FW	200×158	10
DS-R150SW	290×165	9
DS-R200FW	290×225	9
DS-R1S	81×54	8
DS-R1.5S	95×63	9
DS-R2S	121×89	9
DS-R2.5S	127×108	12

Pump Model	D×W (mm)	Blade
DS-R3S	163×128	9
DS-R4S	200×158	9



MONO FLEX PUMP

Mono Flex pump is simple one which sucks and discharges liquid in such a way that special rubber impeller rotors are bent and return continuously

As the impeller's life span is exactly pump's life span itself, we have spent more than 20 years in the research and development for this special synthetic rubber and manufacturing the special synthetic rubber impeller.

This is the type of pump which could never be used for industrial purpose in the world.

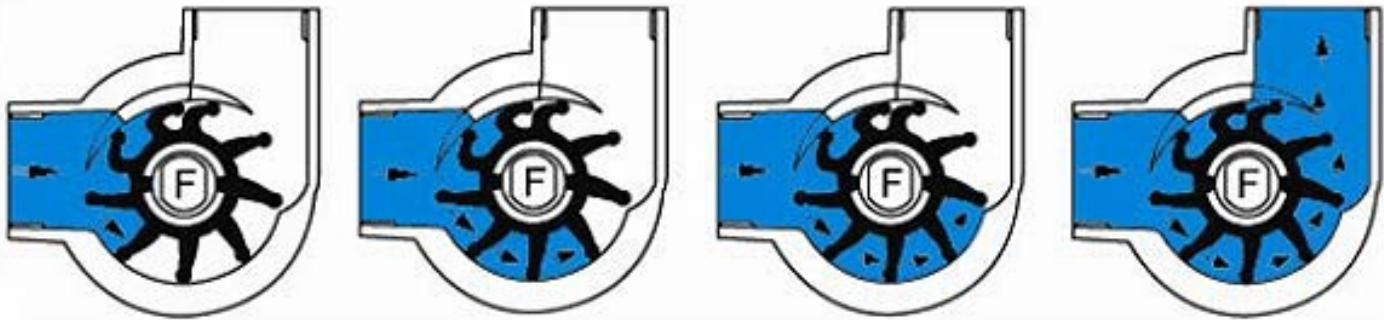


Material of Casing and Shaft

FCD45, SUS304, SUS316, SUS316L,
Alloy-20, SR-50A, Hastelloy B, C,
CD4MCu, Titanium and other special
materials are available.



Principle of Pumping



Mono flex pump is a measurement pump operated by a centrifugal force. It hold the fluids between the rotors of the impeller.

The rotors are bent and return to discharge fluids by rotating and push out the fluids.

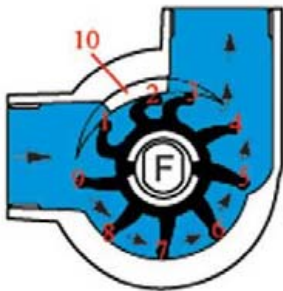
As shown in the diagram, as NO.1 rotor sucks fluids by separating from NO.10 cam. and rotates, the fluids are pushed out at NO.5 rotor position by the rotatory power.

The rotors will strike NO.10 cam at NO.3 rotor position and discharges the rest of the fluids.

This sequencer operation allows it to pump with a low RPM.

If the ball valve is attached to the suction hole, the pumping of proper amount of fluids consistently will be done by controlling the volume of suction.

This is a way of transporting a constant amount of fluids by controlling the RPM.



The application of Mono Flex Pump

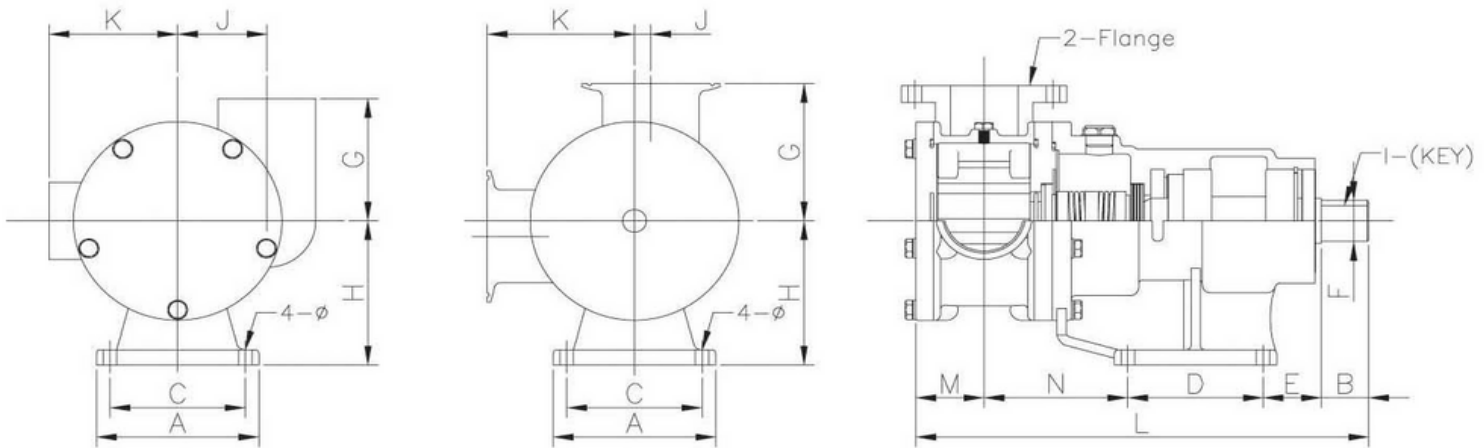
- 1 Transfer various soil-and waste-water sludge, sewage, specific tank outflow, mud, soil agri-livestock waste water and their side products and feeds liquid-type animal feeds and their by-products.
- 2 Transfer fermented fish products (fermented shrimps, anchovy, etc.) red pepper paste, currymixture, edible oil, soy sauce, milk, Makkoli (raw rice wine), soft drinks and various foodstuffs.
- 3 Transfers sulfuric acid, ferrous sulfate, cuprous sulphide, hydrochloric acid, ferrous chloride, nitric acid, dyes, phosphoric acid, acetic acid, caustic soda and other chemicals.
- 4 Transfer lubricant, oil, DOP, various waste oil, petroleum, light oil, thinner, gasoline, cutting oil, fresh oil, rolling oil and other oils.

Mono Flex Pump Specifications

MODEL	HP		PRESSURE kg/cm ²	PORT SIZE	FLOW RATE (l/m)						단위 유량 cc/Rev
	4P	6P			4P		6P		8P		
					60Hz 1750(RPM)	50Hz 1450(RPM)	60Hz 1120(RPM)	50Hz 950(RPM)	60Hz 830(RPM)	50Hz 700(RPM)	
DS-R10	1/2	-	2.2	10A PT	20	17	13	11	10	8	11.6
DS-R15	1/2	-	2.4	15A PT	34	28	22	19	16	14	19.6
DS-R20	1/2	-	2.7	20A PT	59	49	38	32	28	24	33.9
DS-R20FW	1	1/2	4.4	20A PT	64	53	41	35	30	26	36.6
DS-R25	1	1/2	2.7	25A PT	80	66	51	43	38	32	45.5
DS-R25SW	2	1	5.5	25A PT	109	91	70	60	52	44	62.5
DS-R32	2	1	2.7	32A PT	100	83	64	54	47	40	57.1
DS-R32FW	3	2	5.5	32A PT	141	116	90	76	67	56	80.3
DS-R40	2	2	3.3	40A PT	180	149	115	97	85	72	102.6
DS-R40SW	5	3	5.5	40A PT	250	207	160	136	119	100	142.8
DS-R50	3	2	3.3	50A PT	241	199	154	131	114	96	137.5
DS-R50SW	5	3	5.5	50A PT	305	252	195	165	145	122	174.1
DS-R65	5	3	3.8	65A PT	320	265	205	174	152	128	183.0
DS-R65FW	7.5	5	5	65A PT	375	311	240	203	178	150	214.2
DS-R65SW	7.5	5	5.5	65A PT			390	331	289	244	348.2
DS-R80SW	-	7.5	5.5	2-65A Flange			450	382	333	281	401.7
DS-R100FW	-	7.5	5.5	2-65A Flange			540	458	400	337	482.1
DS-R120FW	-	10	5.5	2-100A Flange			700	594	519	438	625.0
DS-R120SW	-	10	5.5	2-100A Flange			860	729	637	537	767.8
DS-R150FW	-	15	6.5	2-125A Flange			1040	882	771	650	928.5
DS-R150SW	-	20	7	2-125A Flange			2565	2176	1901	1603	2290
DS-R200FW	-	30	7	2-150A Flange			3506	3005	2598	2191	3130
DSR-1S	2	1	4.5	1S Ferrule, Male			64	54	47	40	57
DSR-1.5S	2	2	5	1.5S Ferrule, Male			114	97	85	71	102
DSR-2S	5	3	5.5	2S Ferrule, Male			235	200	174	147	210
DSR-2.5S	7.5	5	5.5	2.5S Ferrule, Male			336	285	249	210	300
DSR-3S	7.5	5	5.5	3S Ferrule, Male			540	458	400	337	482.1
DSR-3S	10	7.5	5.5	4S Ferrule, Male			1040	882	771	650	928.5



Dimensions



Industry

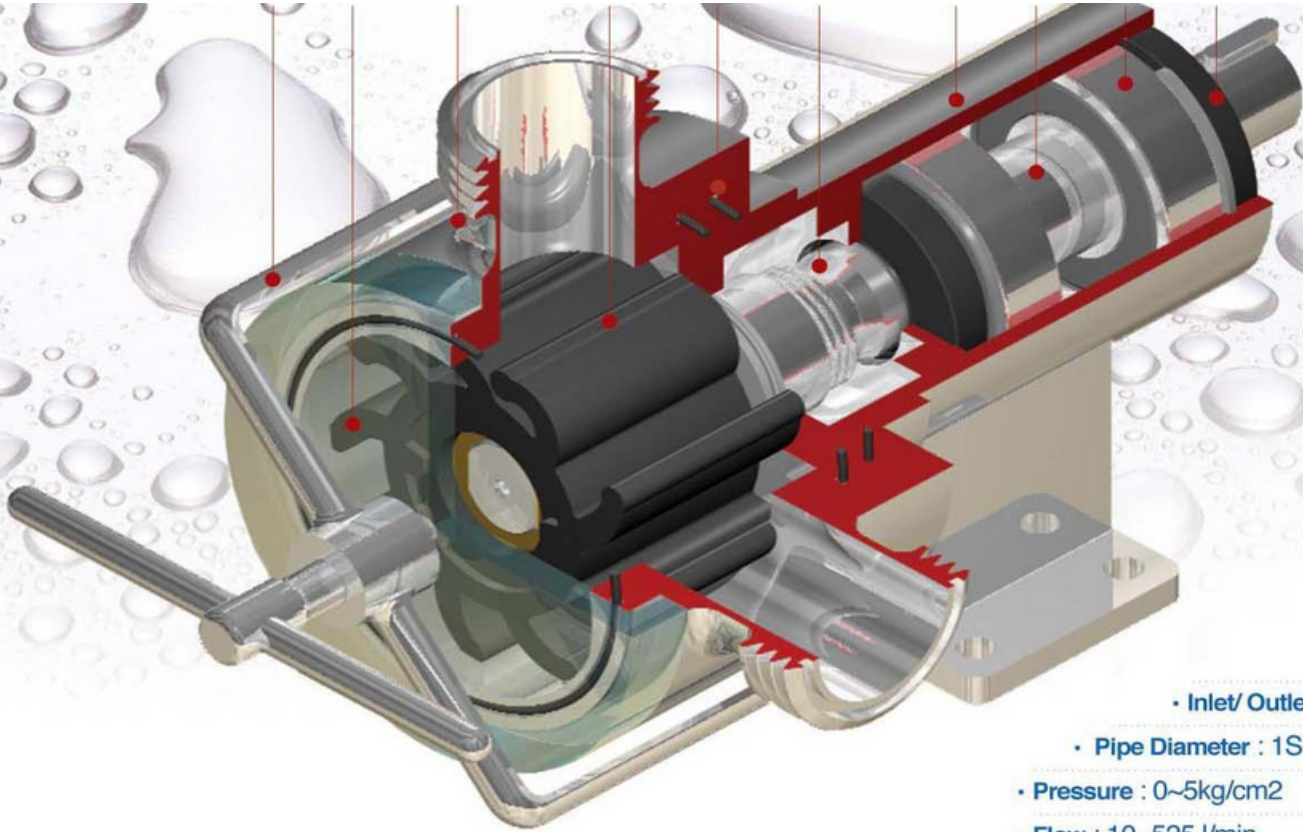
(units :mm)

Model	A	B	C	D	E	F	G	H	I	J	K	L	M	N	2-PS	4-φ
DS-R20FW	75	25	50	60	42	18	60	80	5×5	29	55	237	32	78	2-PS 3/4"	9
DS-R25SW	100	30	70	70	37	22	75	102	7×7	42	78	264	37	90	2-PS 1"	11
DS-R32FW	100	30	70	70	37	22	75	102	7×7	42	78	273	41	95	2-PS 1×1/4"	11
DS-R40FW	100	30	70	70	37	22	75	102	7×7	42	78	282	46	99	2-PS 1×1/2"	11
DS-R40SW	120	35	90	90	48	32	95	112	10×8	66	95	323	43	107	2-PS 1×1/2"	11
DS-R50SW	120	35	90	90	48	32	95	112	10×8	66	95	335	49	113	2-PS 2"	11
DS-R65FW	120	35	90	90	48	32	95	112	10×8	66	95	351	57	121	2-PS 2×1/2"	11
DS-R65SW	190	42	140	140	68	42	120	132	12×8	45	120	440	63	127	2-PS 2×1/2"	13
DS-R80SW	190	42	140	140	68	42	160	132	12×8	50	160	457	71	136	2-65A flange	13
DS-R100FW	190	42	140	140	68	42	160	132	12×8	50	160	477	81	146	2-80A flange	13
DS-R120SW	190	42	140	140	68	42	170	160	12×8	50	170	485	92	143	2-100A flange	13
DS-R150FW	190	42	140	140	68	42	170	160	12×8	50	170	511	98	163	2-125A flange	13
DS-R150SW	240	65	185	185	88	48	220	200	14×9	60	210	589	100	151	2-125A flange	17
DS-R200FW	240	65	185	185	88	48	220	200	14×9	60	210	649	130	181	2-125A flange	17

Sanitary

(units :mm)

Model	A	B	C	D	E	F	G	H	I	J	K	L	M	N	2-Ferrule(Male)	4-fl
DS-R1S	100	30	70	50	49	22	100	80	7×7	5	80	257	37	91	1S	11
DS-R1.5S	100	30	70	50	49	22	100	102	7×7	5	80	263	42	95	1.5S	11
DS-R2S	137	38	112	56	72	28	118	100	8×7	6	118	330	55	109	2S	11
DS-R2.5S	137	54	112	56	72	32	118	100	10×8	12	124	356	60	114	2.5S	11
DS-R3S	150	55	120	123	39.5	38	142	132	12×8	7.5	142	454	74.5	162	3S	11
DS-R4S	150	55	120	123	39.5	38	160	132	12×8	10	160	490	92.5	180	4S	11



- Inlet/ Outlet
- Pipe Diameter : 1S, 1.5S, 2S, 2.5S
- Pressure : 0~5kg/cm²
- Flow : 10~525 l/min



SANITARY PUMP SET



SANITARY PUMP SET



SANITARY TYPE



SANITARY TYPE





Wide Range of
APPLICATIONS

